



**Digital Stand-On
Sit-Down Scale
Models 6876 & 6876KEGU
Operating Instructions**

0065-M481-O1 Rev A
02/04

CARDINAL SCALE MFG. CO.
PO BOX 151 • WEBB CITY, MO 64870
PH (417) 673-4631 • FAX (417) 673-5001
Web Site - <http://www.detectoscale.com>

Printed in USA

DIGITAL STAND-ON / SIT-DOWN SCALE

Thank you for purchasing our Model 6876 (6876KGEU) Digital Stand-On / Sit-Down Scale. It has been manufactured with quality and reliability at our factory in Webb City, MO USA. Your scale has been tested before leaving our factory to insure accuracy and dependability for years to come.

This manual is provided to guide you through the operation of your scale. Please read it thoroughly before attempting to operate your scale and keep it handy for future reference.

FCC COMPLIANCE STATEMENT

WARNING! This equipment generates, uses and can radiate radio frequency and if not installed and used in accordance with the instruction manual, may cause interference to radio communications. It has been tested and found to comply with the limits for a Class A computing device pursuant to Subpart J of Part 15 of FCC rules, which are designed to provide reasonable protection against such interference when operated in a commercial environment. Operation of this equipment in a residential area may cause interference in which case the user will be responsible to take whatever measures necessary to correct the interference.

You may find the booklet "How to Identify and Resolve Radio TV Interference Problems" prepared by the Federal Communications Commission helpful. It is available from the U.S. Government Printing Office, Washington, D.C. 20402. Stock No. 001-000-00315-4.

All rights reserved. Reproduction or use, without expressed written permission, of editorial or pictorial content, in any manner, is prohibited. No patent liability is assumed with respect to the use of the information contained herein. While every precaution has been taken in the preparation of this manual, the Seller assumes no responsibility for errors or omissions. Neither is any liability assumed for damages resulting from use of the information contained herein. All instructions and diagrams have been checked for accuracy and ease of application; however, success and safety in working with tools depend to a great extent upon the individual accuracy, skill and caution. For this reason the Seller is not able to guarantee the result of any procedure contained herein. Nor can they assume responsibility for any damage to property or injury to persons occasioned from the procedures. Persons engaging the procedures do so entirely at their own risk.

SPECIFICATIONS

	6876	6876KGEU
Capacity	600 lb x .2 lb (270 kg x .1 kg)	270 kg x .1 kg
Platform Size	24" x 24" (61cm x 61cm) with non-slip rubber mat	
Display	0.7" / 18 mm high-contrast 7-segment LCD with Body Mass Index	
Power	6 "C" size alkaline batteries or optional AC adapter	
Keys	On/Off, Zero, Lb/Kg, Hold/Release	
Display Functions	Auto power off, Hold/release of display, Motion detection and Body Mass Index Calculator	

EUROPEAN DECLARATION OF CONFORMITY

Manufacturer: Detecto Scale Company
Cardinal Scale Manufacturing Company
PO Box 151
203 East Daugherty
Webb City, Missouri 64870 USA

Telephone No. + 417 673 4631
Fax No. + 417 673 5001

Product: Digital Stand-On / Sit-Down Scale
Model Number 6876
Serial Number EXXXYY-ZZZ
where XXX = day of year
YY = last two digits of year
ZZZ = sequential number

The undersigned hereby declares, on behalf of Detecto Scale Company and Cardinal Scale Manufacturing Company of Webb City, Missouri, that the above-referenced product, to which this declaration relates, is in conformity with the provisions of:

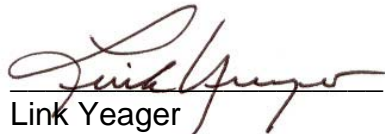
European Standard EN45501 and equivalent International
Recommendation OIML R76, edition 1992
Test Certificate Number: GB-1136

Council Directive 73/23/EEC (19 February, 1973) Low Voltage Directive as amended by
Council Directive 93/68/EEC (22 July, 1993)

Council Directive 90/384/EEC (20 June, 1990) on the Harmonization
Of the Laws of Member States relating to non-automatic weighing
Systems as amended by:
Council Directive 93/68/EEC (22 July, 1993)
Certificate of EU Type Approval Number: UK 2655

European Standard EN55024 for radiated emissions Class A
European Standard EN55024 for conducted disturbances Class A
Test Report Number: 020424-537

The Technical Construction File required by this Directive is maintained at the corporate headquarters of Cardinal Scale Manufacturing Company, 203 East Daugherty, Webb City, Missouri.


Link Yeager
Director, Quality Assurance

UNPACKING INSTRUCTIONS

- Remove staples or cut along bottom of carton. Lift carton off pallet.
- Check for any damage incurred in shipping. If scale has been damaged, place a claim with the carrier. *It is the responsibility of the purchaser to file all claims for any damages or loss incurred during transit.* Use the original carton and shipping material to return the scale.
- Cut packing straps securing scale to pallet.
- To remove scale from pallet, at the back of the scale lift up with equal force from the column and at the platform base near the wheels on the scale. Set gently on floor.
- Remove all plastic wrapping, foam fillers and cardboard material from the scale.
- Remove and unpack the power supply and cord, if the scale was ordered with this option.

CARE and CLEANING of SCALE

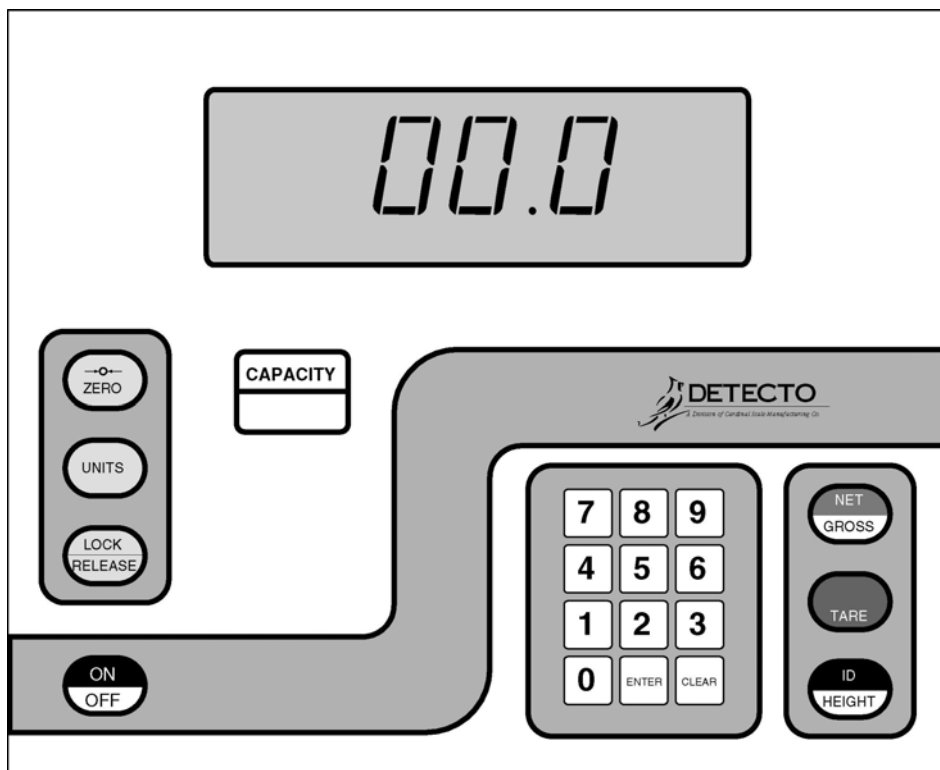
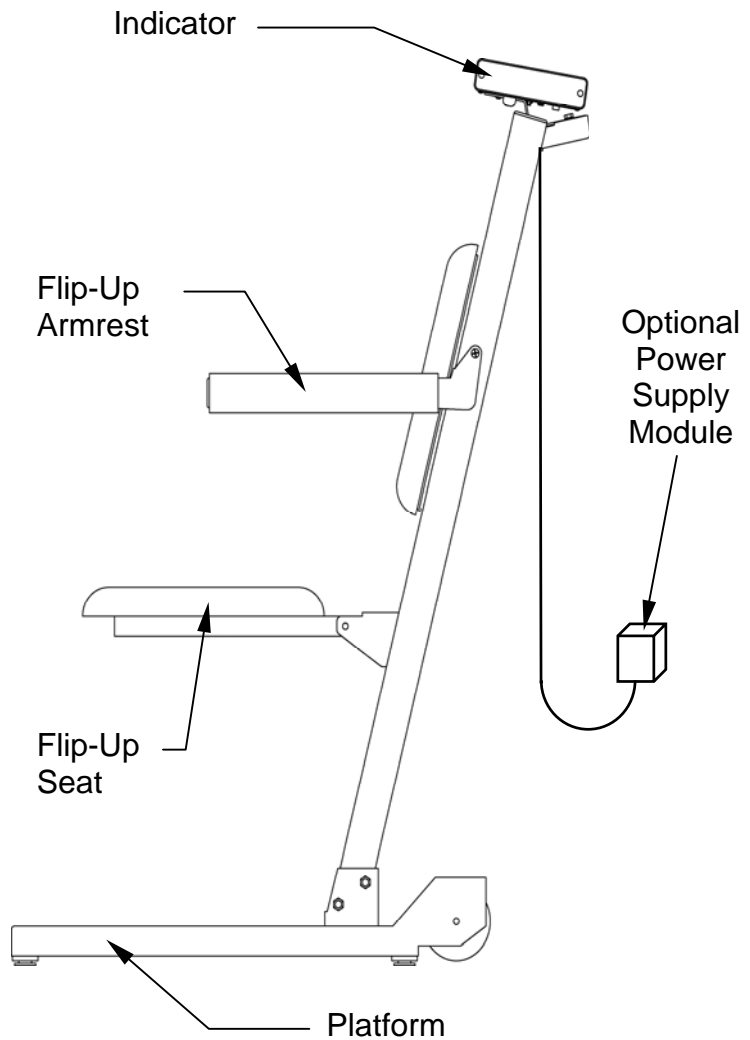
- DO NOT subject the platform to sudden shocks.
- DO NOT spray water directly on the display head.
- DO avoid areas where the scale might be exposed to moisture.
- DO NOT use abrasive cleaners on this instrument.
- DO NOT use acetone or other volatile solvents for cleaning.
- DO clean the scale using a damp soft cloth and mild detergent.

ERROR and STATUS DISPLAYS

Display	Meaning
-Err-	General error, invalid keypad entry was attempted.
-OF-	Attempting to display a negative number greater than -9,999 or a positive number greater than 99,999
-tRL-	Indicates an attempt to zero a weight outside the scale zero range. (See Four Percent Zero Tracking Range Limit).
-UnS-	Motion is present when the indicator is attempting to perform one of the following operations: Power Up Zero or Zero Weight Display
AdErr	An analog to digital convertor communication error has been detected. Consult the scale service representative.
[AL]b	Indicates improper stored calibration data, calibration is necessary.
ErrA	The analog to digital sample is invalid.
ErrAL	The load cell input is below the range of the indicator.
ErrAH	The load cell input is above the range of the indicator.
EE Err	NOVRAM failure. Consult the scale service representative.
OCAP	Scale weight exceeds scale capacity
OFF	Displayed to indicate the indicator is turning off.

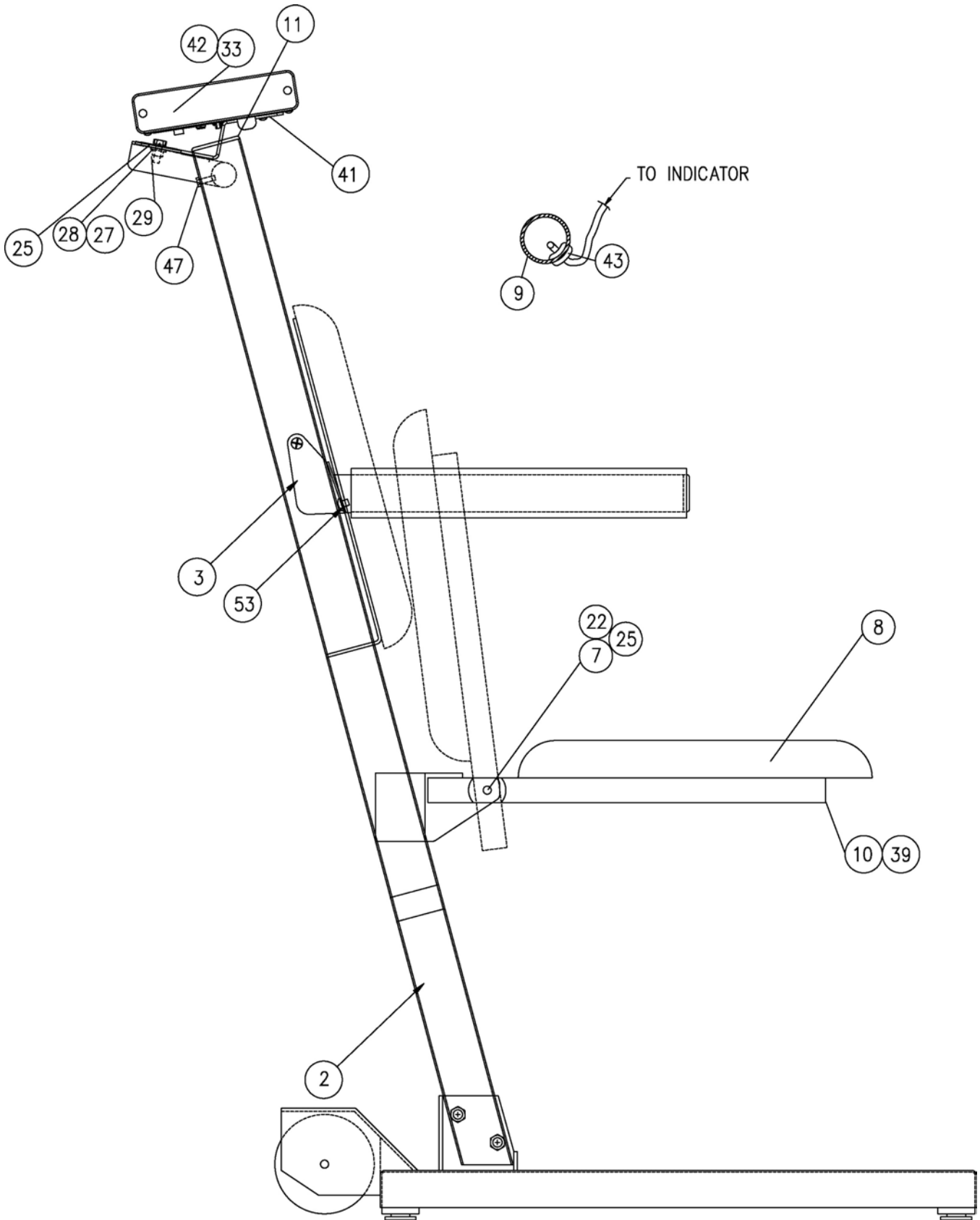
OPERATING INSTRUCTIONS

1. Install six (6) "C" size batteries or if ordered with the scale, plug the power supply module into an appropriate power receptacle. Plug the small connector end of the power supply cord into the power jack located in the bottom right corner at the back of the indicator.
2. Set the scale on any hard, level, flat surface or low-cut carpet.
3. With no weight on the scale platform, press the [**ON/OFF**] key. After a second or so the display should indicate a zero weight with the ZERO annunciator turned on. If the display does not indicate zero, press the [**ZERO**] key to zero the weight display.
4. Step on the scale and remain motionless for several seconds until the scale displays your weight.
5. To re-zero the scale, remove all weight from the platform and press the [**ZERO**] key.
6. For more information, see the 758C Series Operation Manual (8555-M210-O1).

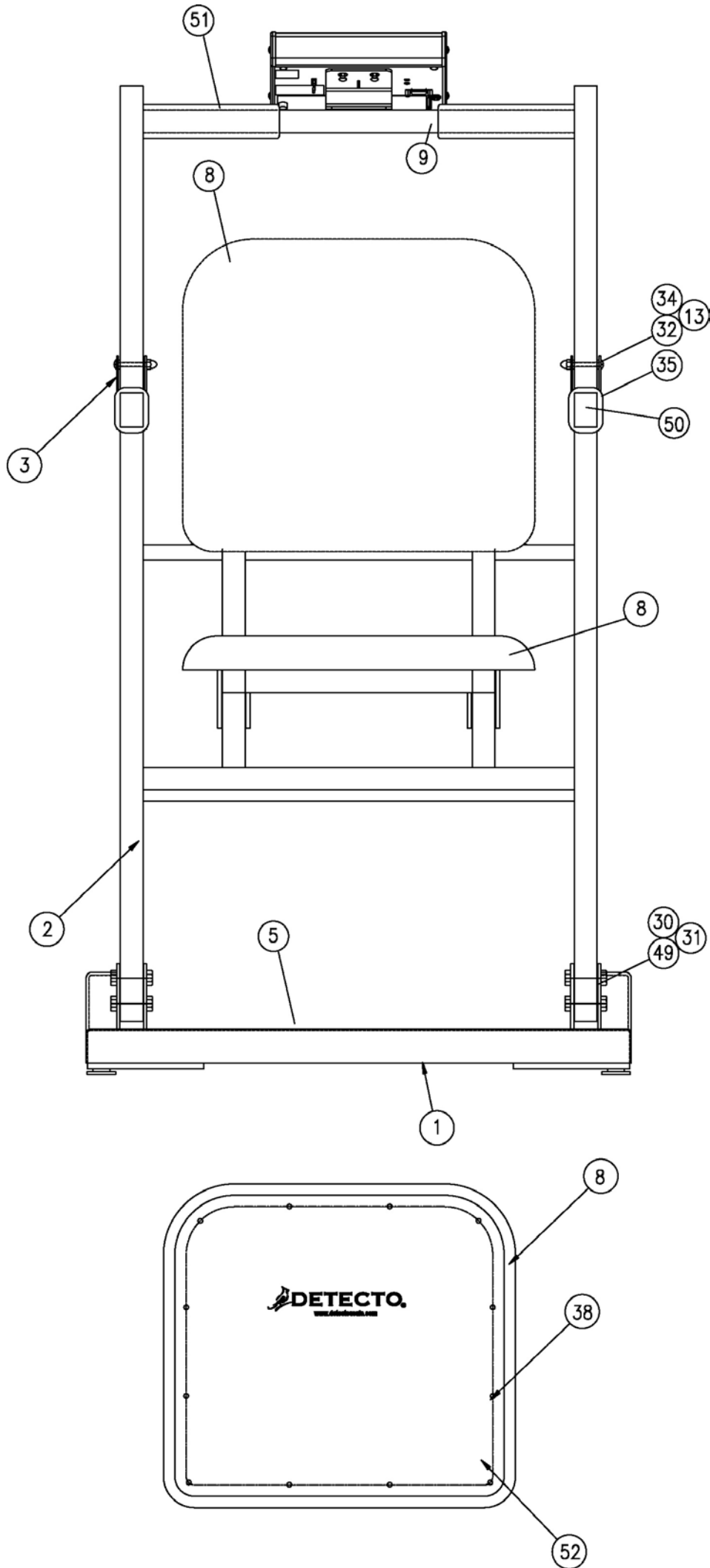


758C Keypad

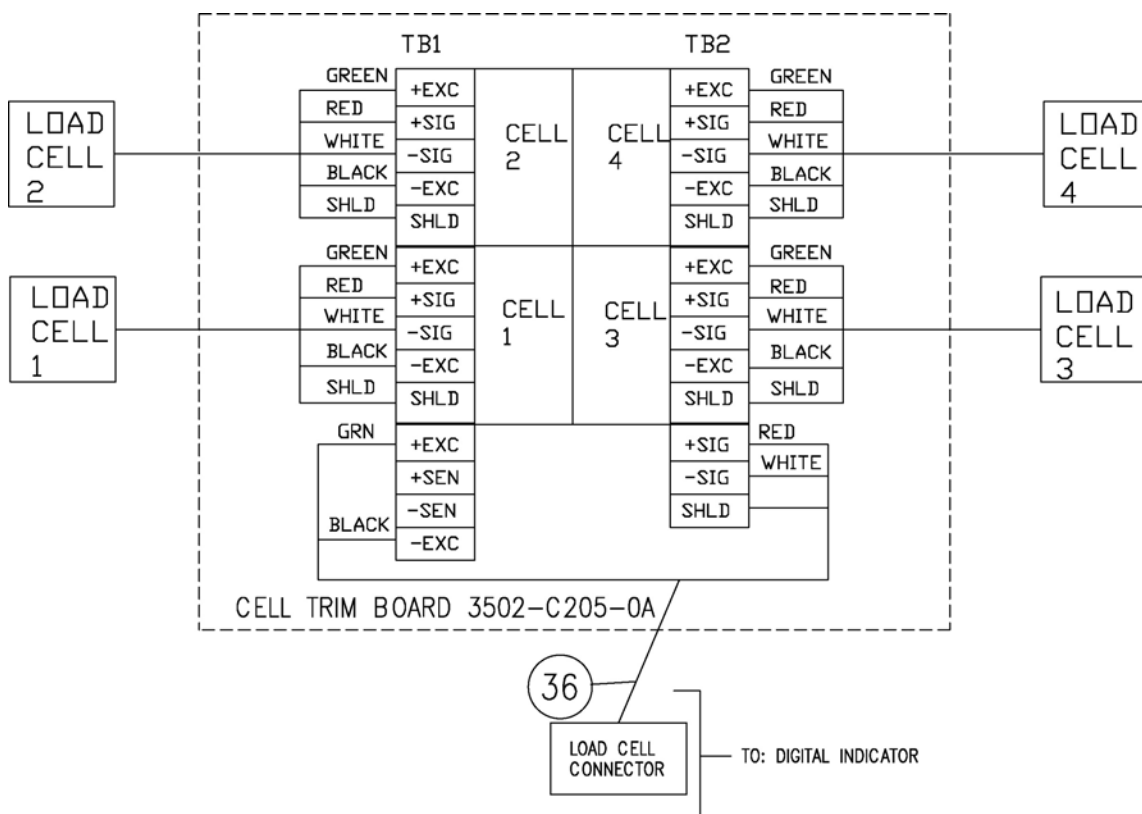
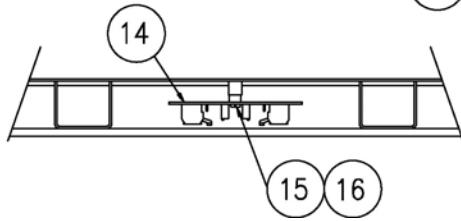
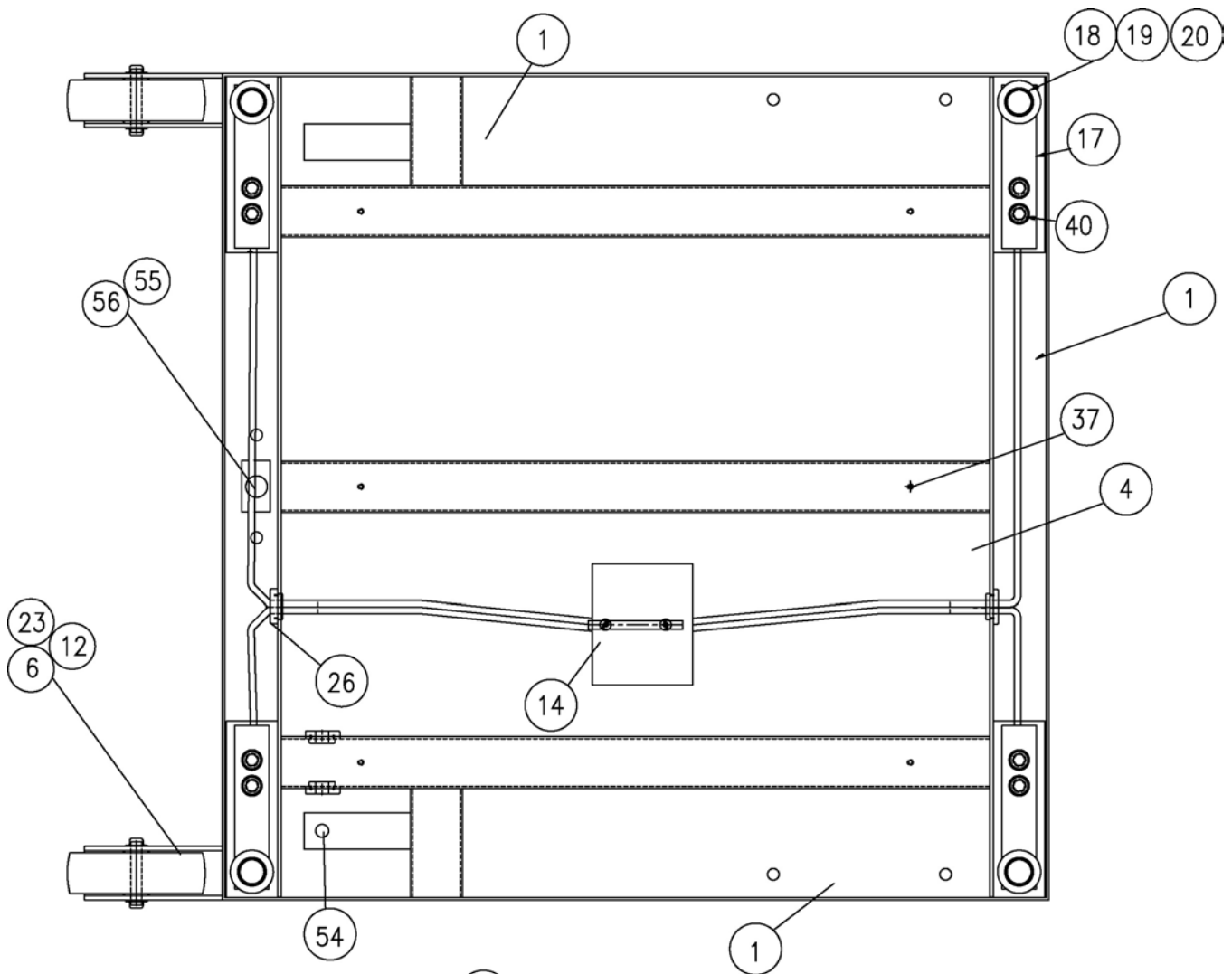
PART IDENTIFICATION



PART IDENTIFICATION



PART IDENTIFICATION



PART IDENTIFICATION

ITEM #	QTY	PART NUMBER	DESCRIPTION
1	1	0065-D450-0A	BASE WELDMENT
2	1	0065-D451-0A	UPPER FRAME WELDMENT
3	2	0065-C452-0A	ARM WELDMENT
4	1	1930-C451-08	J-BOX COVER
5	1	0065-C453-08	MAT, RUBBER
6	2	0065-B454-08	AXLE 5/16 DIA x 2.125
7	2	0065-B437-08	SHAFT, SEAT
8	2	0065-C414-08	SEAT, PADDED
9	1	0065-C232-0A	CROSS TUBE ASSY
10	1	0065-C419-08	SEAT, SUPPORT
11	2	6540-1098	CAP PLUG
13	2	6013-0433	NUT ACORN 10-30 THREADLOCK SS
14	1	3502-C205-0A	PC BRD ASSY
15	2	6021-0695	SCW MACH #6-32 x .5 ZP
16	2	6680-0138	SPACER NYLON #6 x .187
17	4	LFB-250M	LOAD CELL
18	4	0065-B108-08	ALUM FOOT
19	8	6020-0012	SPRING PIN
20	4	6540-1122	RUBBER FOOT
21	4	1930-B205-08	SHIM
22	8	399R1048	PUSH NUT
23	2	6540-1205	WHEEL 4" DIA
24	1	593GR986	SERIAL TAG
25	5	0033-B110-08	DISK UHMW
26	4	6680-1044	GROMMET
27	1	6021-1454	SCW HEX HEAD 1/4-20 x 3/4"
28	1	6024-0003	WASHER 1/4"
29	1	391RV204	NUT ELASTIC STOP 1/4-20
30	4	6007-0051	SCW HEX HEAD 3/8-16 x 2"
31	4	6013-0070	NUT ELASTIC STOP 3/8-16
32	2	6021-1263	SCW TRUSS HEAD #10-32 x 1 1/2"
33	1	758C	INDICATOR FOR 6876
34	4	6024-1045	WASHER FLAT TEFLON
35	2	6540-0030	GRIP FOAM
36	1	0065-B403-0A	INDICATOR CABLE
37	4	6021-0665	SCW PAN HEAD #6-32 x 3/8"
38	24	6021-1509	SCW PAN HEAD #8 x .75 PHIL DRV Z/P
39	4	6021-1105	SCW PAN HEAD #12 x 1.75
40	8	6021-2063	SCW SOC HEAD 3/8-24 x 1"
41	1	0033-B162-08	INDICATOR MOUNTING
42	1	758CSV	INDICATOR FOR 6876KEGU
43	1	6680-1043	GROMMET
47	2	6021-0981	SCW HEX HEAD #10 x 3/4" TYPE B
49	8	6024-0009	WASHER FLAT 3/8"
50	2	6540-1099	CAP PLUG 1" x 1 1/2"
51	1	6540-1070	GRIP FOAM (CUT IN HALF)
52	1	0065-C428-0A	SEAT BOTTOM COVER
53	2	6540-1094	BUMPER
54	1	6680-0164	GROMMET .43 THK x .25 I.D. FOR 1/4" PANEL
55	1	6690-0001	LEVEL, BULLSEYE

